

# CS



## SINGLE POLE POWER CONNECTOR



**250 A**

- ▶ From 75 to 250 A - very low voltage (maximum 50 V)
- ▶ Bayonet contact system
- ▶ Self-cleaning contacts
- ▶ 16 to 95 mm<sup>2</sup> conductors

## TECHNICAL FEATURES

Type CS	Wire cross-section (mm <sup>2</sup> )	In rated current (A)	i max welding cycle (A)	
			5 minutes cycles	
			60 %	30 %
CS2	16	75	100	150
	25	100	125	200
	35	125	150	250
	50	150	200	300
CS3	50	150	200	300
	70	200	250	350
	95	250	300	400

\* Definition of 30% welding cycle: on a 5 min cycle, 30% of the time working (i.e. 1 min 30 s) and 70% off (i.e. 3 min 30 s).

**INLET** male  
with lug



**PLUG**  
male with lug



Wire cross-section (mm <sup>2</sup> )	Rated current welding cycle		CS2	CS3	CS2	CS3
	60 %	30 %				
	16	100 A	150 A	4 2901 016		4 0201 016
25	125 A	200 A	4 2901 030		4 0201 030	
35	150 A	250 A	4 2901 040		4 0201 040	
50	200 A	300 A	4 2901 050	4 3901 050	4 0201 050	4 0301 050
70	250 A	350 A		4 3901 075		4 0301 075
95	300 A	400 A		4 3901 100		4 0301 100
with screw	200 A	300 A	4 2901 121			
with screw	300 A	400 A		4 3901 121		

**SOCKET-OUTLET**  
female with lug



**COUPLER**  
socket female  
with lug



Wire cross-section (mm <sup>2</sup> )	Rated current welding cycle		CS2	CS3	CS2	CS3
	60 %	30 %				
	16	100 A	150 A	4 2401 016		4 2301 016
25	125 A	200 A	4 2401 030		4 2301 030	
35	150 A	250 A	4 2401 040		4 2301 040	
50	200 A	300 A	4 2401 050	4 3401 050	4 2301 050	4 3301 050
70	250 A	350 A		4 3401 075		4 3301 075
95	300 A	400 A		4 3401 100		4 3301 100
with screw	200 A	300 A	4 2401 121			
with screw	300 A	400 A		4 3401 121		

## ADDITIONAL COPPER LUGS

**Lug choice depends on the cable:** the cross-section of the flexible cable mentioned in the table below is for information only. Please check dimensions as these may vary according to cable types and manufacturers.



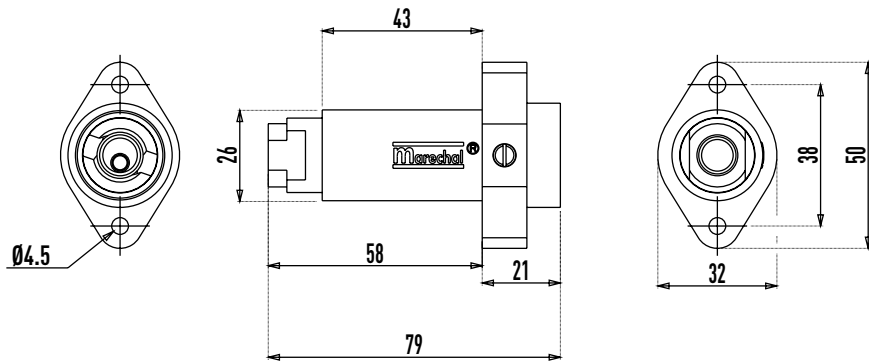
Wiring (mm <sup>2</sup> )		Straight threaded M10*	Straight threaded M14*	Internal diameter (mm)
Flexible	Stranded	CS2	CS3	
16	25	4 2 301 416		6,6
25	35	42 301 430		7,9
35	50	42 301 440		9,2
50	70	42 301 450	4 3301 450	11
70	95		4 3301 475	13,1
95	120		4 3301 400	14,5

\* Wiring with crimping lugs, according to NF C20-130 standard (for VDE 0220 standard, please contact us). Crimping: double hexagonal crimping is recommended.

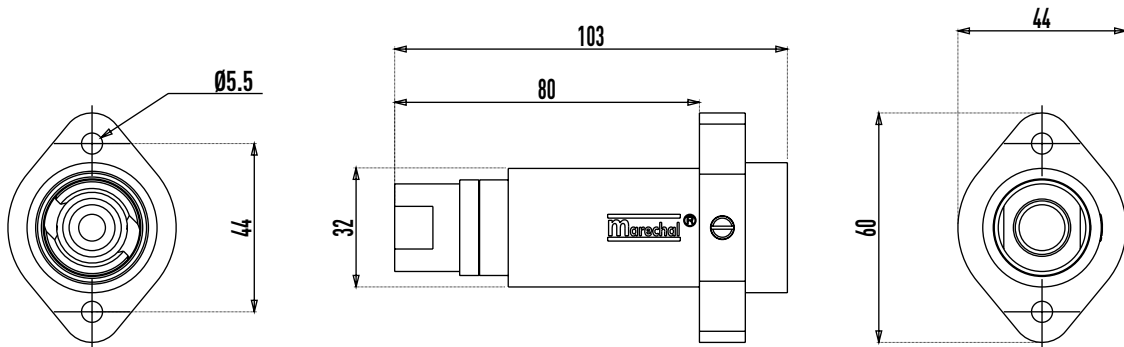


# DIMENSIONS

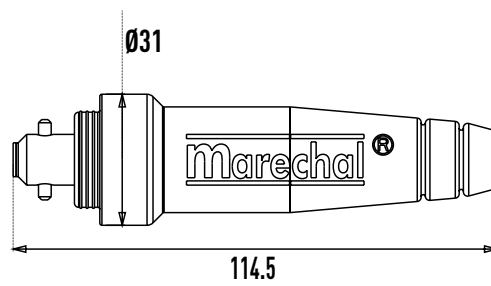
## CS2/SOCKET-OUTLET



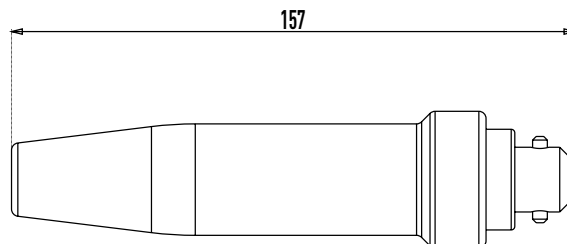
## CS3/SOCKET-OUTLET

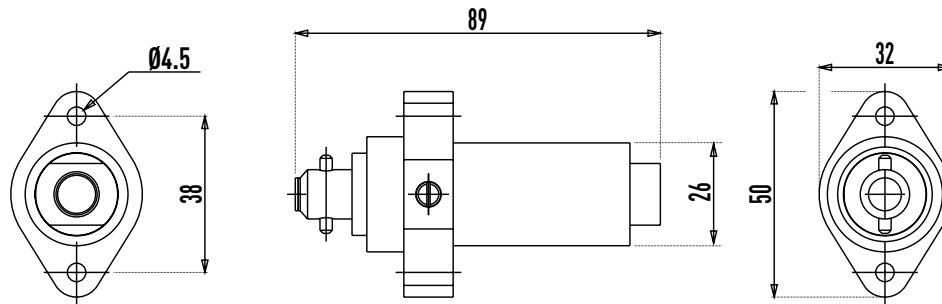
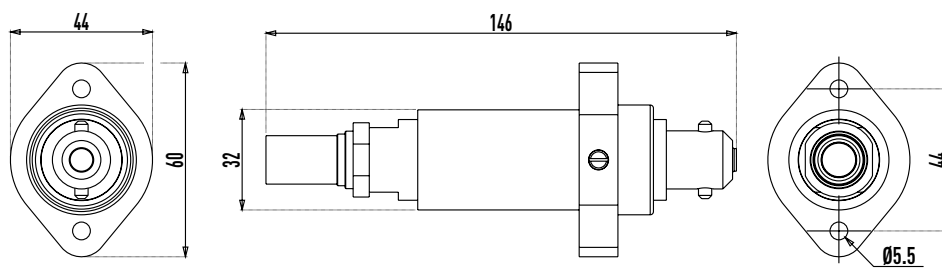
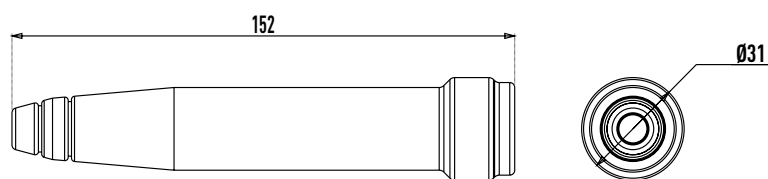


## CS2/PLUG



## CS3/PLUG



CS<sub>2</sub>/INLETCS<sub>3</sub>/INLETCS<sub>2</sub>/COUPLER SOCKETCS<sub>3</sub>/COUPLER SOCKET